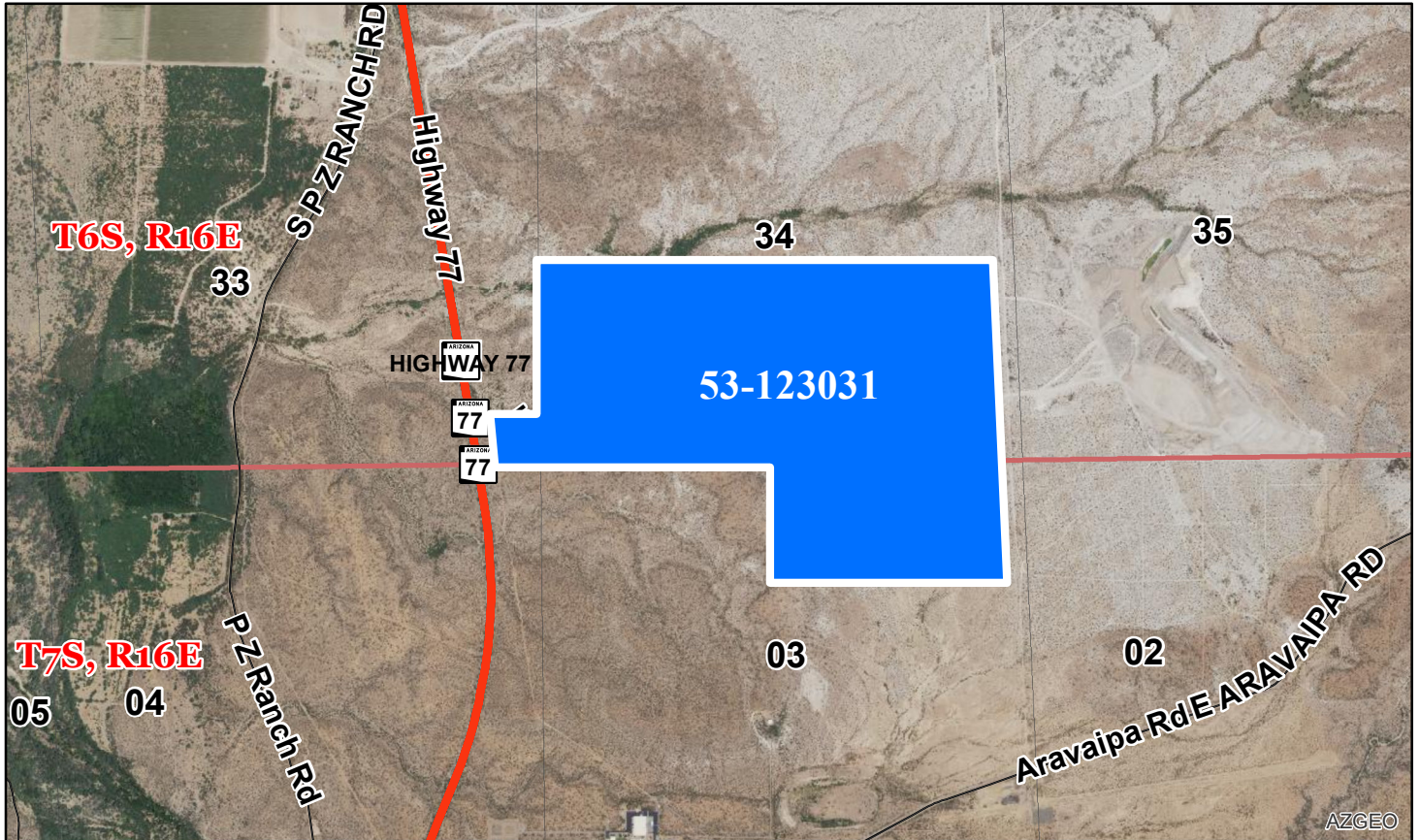




AVAILABLE FOR SALE

East of Highway 77, 8 miles South of Winklemen, Arizona



Application No.: 53-123031
Auction Location: 1891 Historic Pinal County Courthouse
 135 North Pinal Street
 Florence, AZ
Auction Date: June 6, 2024
Minimum Bid: \$551,000.00
Acreage: 408.224 ACRES (more or less)

FOR ADDITIONAL INFORMATION CONTACT:
BRYAN SPARKS, Administrator (602) 542-3000

DISCLAIMER: This information is designed for general overview purposes only. Unless otherwise stated, all figures and depictions are approximate. Prospective bidders should review all information in the State Land Department's records relating to the property and seek technical or legal advice as needed, to assure the understanding of all legal descriptions, plat maps, surveys, and other documents relevant to the property. Informational marketing CDs may be available upon request. For more information, please contact ASLD Sales and Commercial Leasing Section at (602) 542-3000 or visit us online at www.AzLand.gov.

