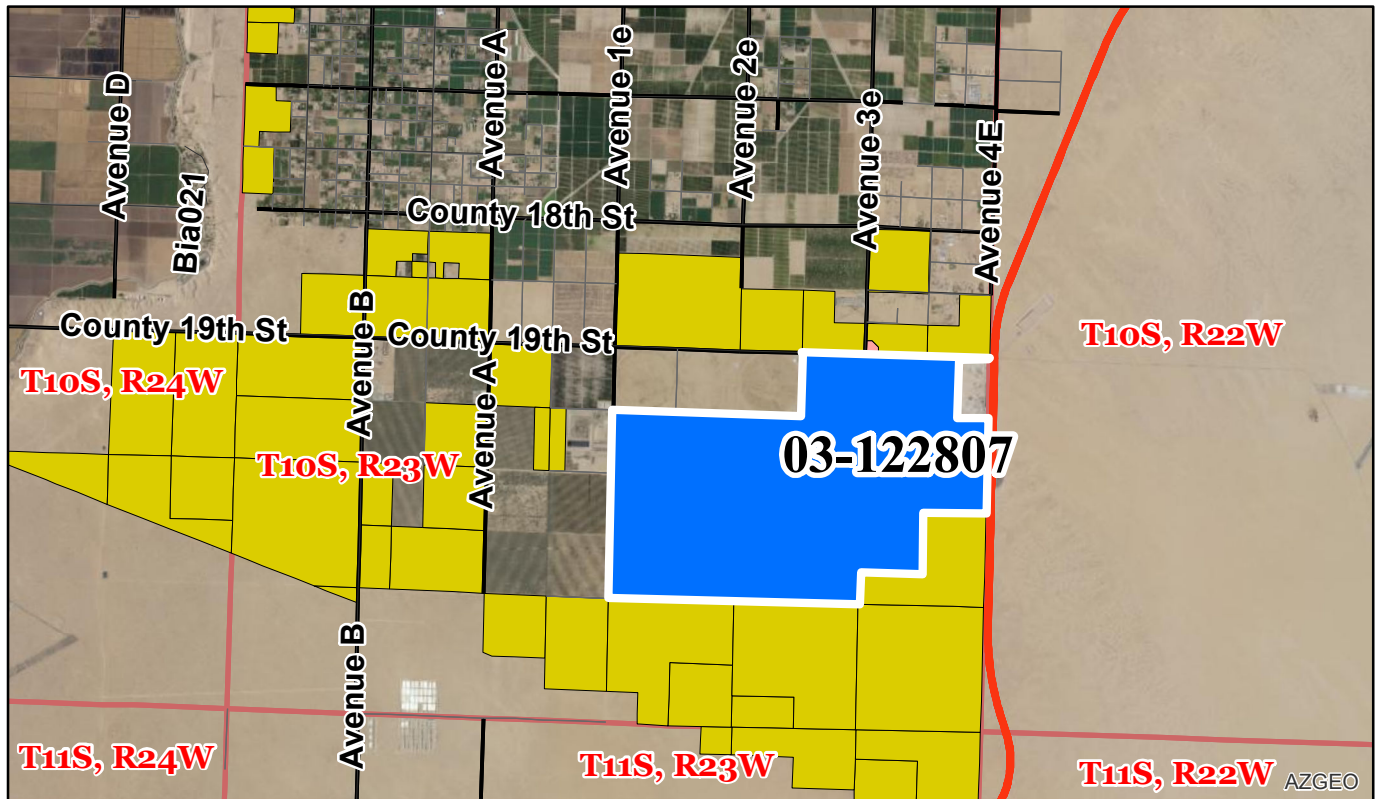


# ARIZONA

STATE LAND DEPARTMENT  
AVAILABLE FOR LEASE

## South of East County 19th Street Between State Route 195 and South Avenue 1E



**Application No.:** 03-122807  
**Auction Location:** Yuma County Courthouse  
250 West Second Street  
Yuma, AZ  
**Auction Date:** May 21, 2025 11:00 AM  
**Minimum Bid:** \$11,985,000.00  
**Acreage:** 1,410.287 ACRES (more or less)

FOR ADDITIONAL INFORMATION CONTACT:  
**RAY MOORE**, Administrator (602) 542-3000

**DISCLAIMER:** This information is designed for general overview purposes only. Unless otherwise stated, all figures and depictions are approximate. Prospective bidders should review all information in the State Land Department's records relating to the property and seek technical or legal advice as needed, to assure the understanding of all legal descriptions, plat maps, surveys, and other documents relevant to the property. Informational marketing CDs may be available upon request. For more information, please contact ASLD Sales and Commercial Leasing Section at (602) 542-3000 or visit us online at [www.Land.Az.gov](http://www.Land.Az.gov).



Updated: 3/7/2025