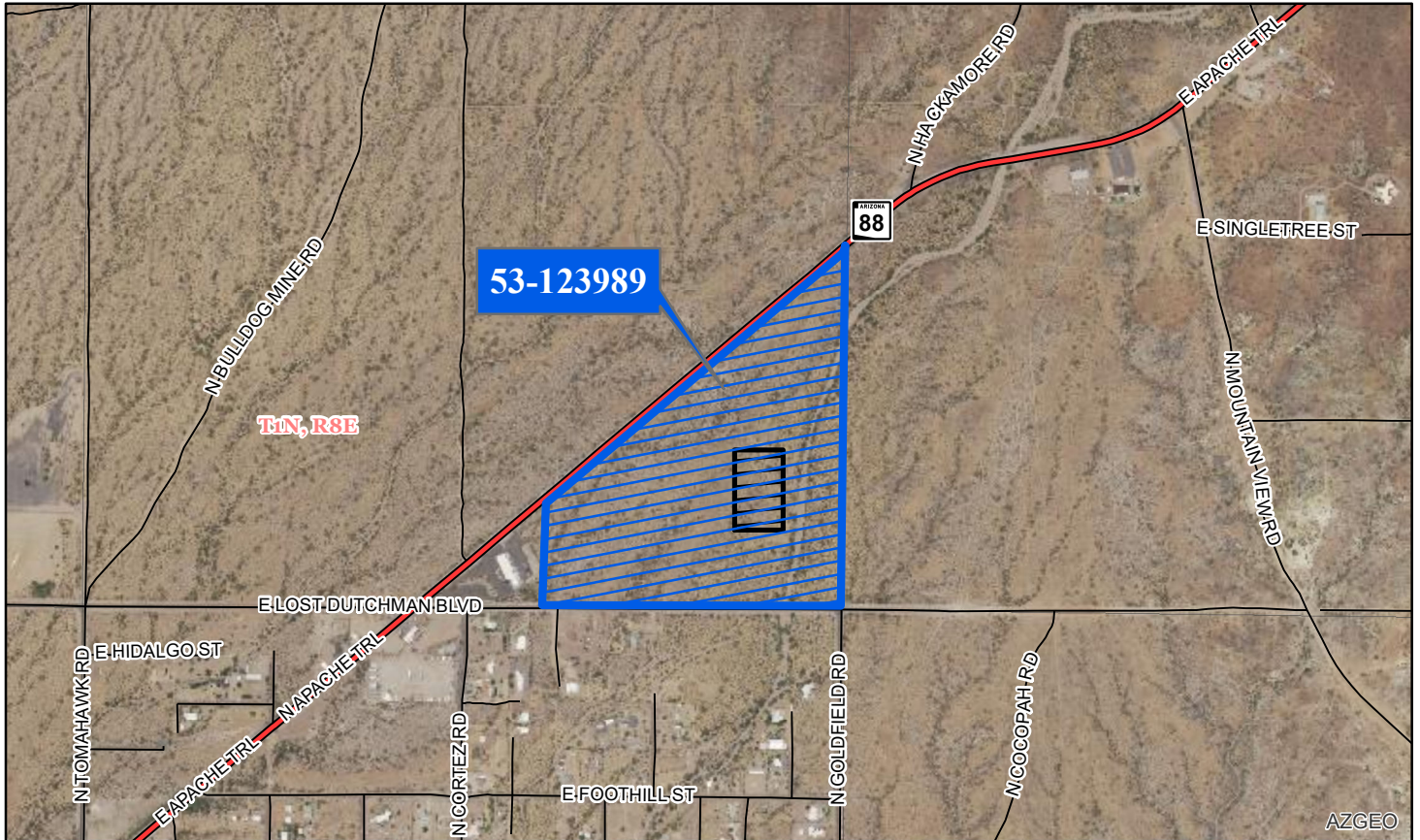


ARIZONA

STATE LAND DEPARTMENT
AVAILABLE FOR SALE

SOUTH OF HWY 88 & NORTH OF EAST LOST DUCHMAN BLVD



Application No.: 53-123989
Auction Location: 1891 HISTORIC PINAL COUNTY COURTHOUSE
135 N PINAL STREET
BOS OVERFLOW ROOM
FLORENCE, AZ
Auction Date: JUNE 26, 2025 12:30 PM
Minimum Bid: \$4,590,000.00
Acreage: 76.538 ACRES (more or less)

FOR ADDITIONAL INFORMATION CONTACT:
BRYAN SPARKS, Administrator (602) 542-3000

DISCLAIMER: This information is designed for general overview purposes only. Unless otherwise stated, all figures and depictions are approximate. Prospective bidders should review all information in the State Land Department's records relating to the property and seek technical or legal advice as needed, to assure the understanding of all legal descriptions, plat maps, surveys, and other documents relevant to the property. Informational marketing CDs may be available upon request. For more information, please contact ASLD Sales and Commercial Leasing Section at (602) 542-3000 or visit us online at www.AzLand.gov.



Updated: 5/6/2025