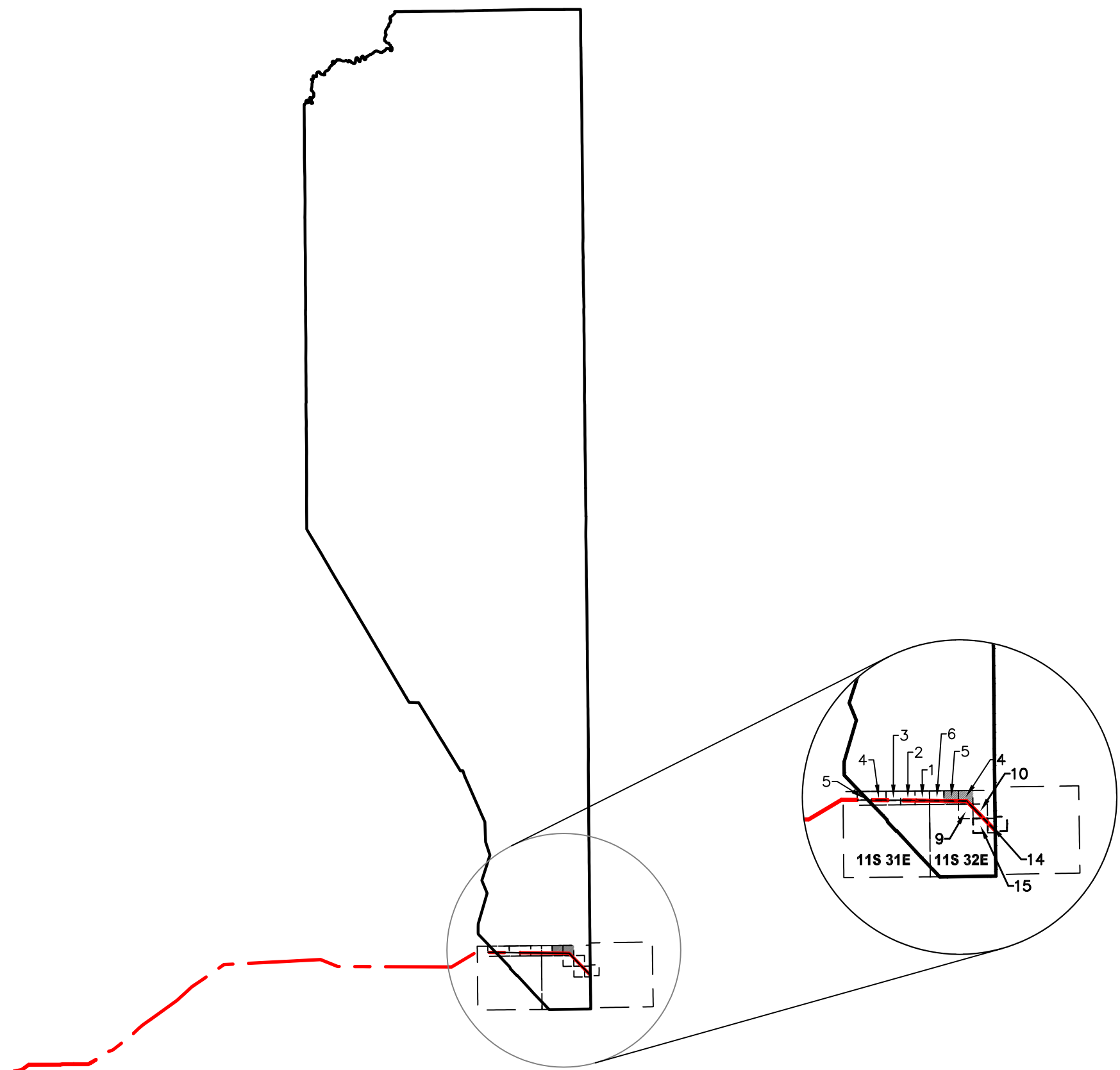


**PRELIMINARY R-O-W GREENLEE COUNTY INDEX SHEET**  
**ARIZONA STATE LAND DEPARTMENT**



SHEET NUMBER	LEASE NUMBER	TOWNSHIP RANGE SECTION
SHT-01	005-000763	11S-32E-5
SHT-02	005-000763	11S-32E-4

**LEGEND**

	PROPOSED CENTERLINE
	TOWNSHIP LINE
	SECTION LINE
	ARIZONA STATE LAND DEPARTMENT

	LINEAR FEET	SQUARE FEET	ACRES
R-O-W LINE B	9658	2173025	49.886

PROJECT: SW TRANSMISSION
JOB NUMBER: 1016037162
DATE: 8/10/2016
SCALE: NA
TRACT ID:
DRAWN BY: JAH



**SAM**  
 SURVEYING-GENERAL MAPPING-ENGINEERING

555 Zang St., Suite 210 Lakewood CO, 80228  
 Ph: (303) 988-5852 Fax: (303) 988-2195  
 EMAIL: info@sam.biz

SUNZIA  
 SOUTHWEST TRANSMISSION  
 PROJECT  
 ASLD ROW APPLICATION  
 GREENLEE COUNTY, ARIZONA

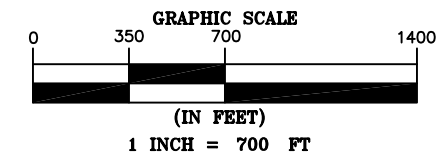
01-GREENLEE-INDEX SHEET.DWG

# PRELIMINARY R-O-W EXHIBIT LINE B

## ARIZONA STATE LAND DEPARTMENT

NORTHWEST CORNER  
SECTION 5  
CALCULATED CORNER

NORTHEAST CORNER  
SECTION 5  
CALCULATED CORNER



ARIZONA STATE LAND DEPARTMENT

SECTION. 5

TOWNSHIP. 11S

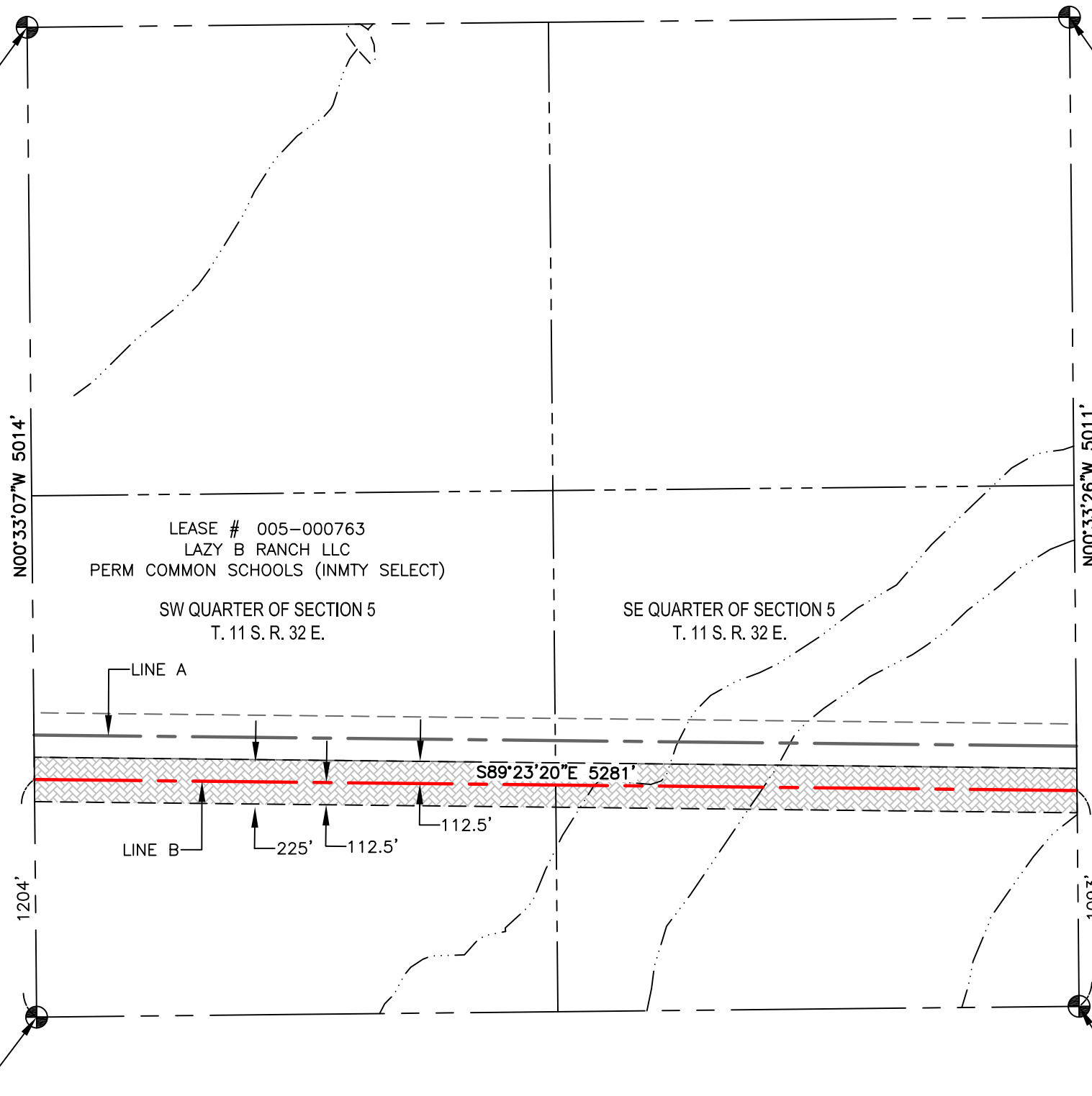
RANGE. 32E

### LEGEND

- RIGHT OF WAY CENTERLINE
- SECTION LINE
- QUARTER SECTION LINE
- FLOWLINES
- WATERBODY
- RIGHT OF WAY LINE B
- CALCULATED SECTION CORNER

### NOTES:

1. THIS EXHIBIT DOES NOT REPRESENT A MONUMENTED LAND SURVEY.
2. BOUNDARY LINES SHOWN HEREON ARE FROM GIS DATABASES.
3. ALL FEMA AND 404 WATERWAY INFORMATION SHOWN IS OF BEST REPRESENTATION OF AVAILABLE MAPS
4. SURVEYING AND MAPPING, INC. ACCEPTS NO LIABILITY WITH RESPECT TO THE ACCURACY OF THE RECORD INFORMATION PROVIDED BY OTHERS.
5. ALL BEARINGS ARE GRID BEARINGS AND ARE BASED ON NAD83 ARIZONA STATE PLANE, EAST ZONE. ALL DISTANCES ARE REPRESENTED IN GRID VALUES, MEASURED IN INTERNATIONAL FEET, AND ARE BASED ON SAID HORIZONTAL DATUM.



SOUTHWEST CORNER  
SECTION 5  
CALCULATED CORNER

SOUTHEAST CORNER  
SECTION 5  
CALCULATED CORNER

	LINEAR FEET	SQUARE FEET	ACRES
<i>R-O-W LINE B</i>	5281	1188191	27.277

PROJECT: SW TRANSMISSION
JOB NUMBER: 1016037162
DATE: 8/10/2016
SCALE: 1" = 700'
TRACT ID:
DRAWN BY: FBL



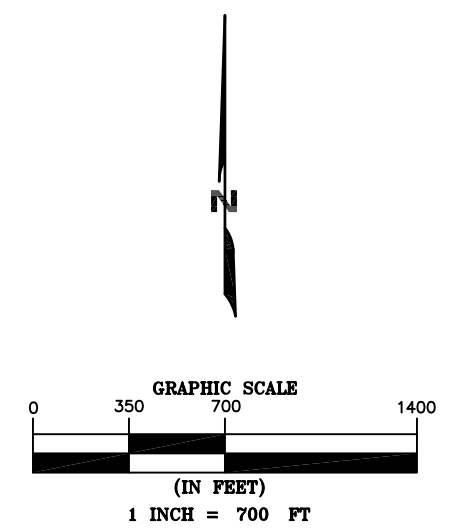
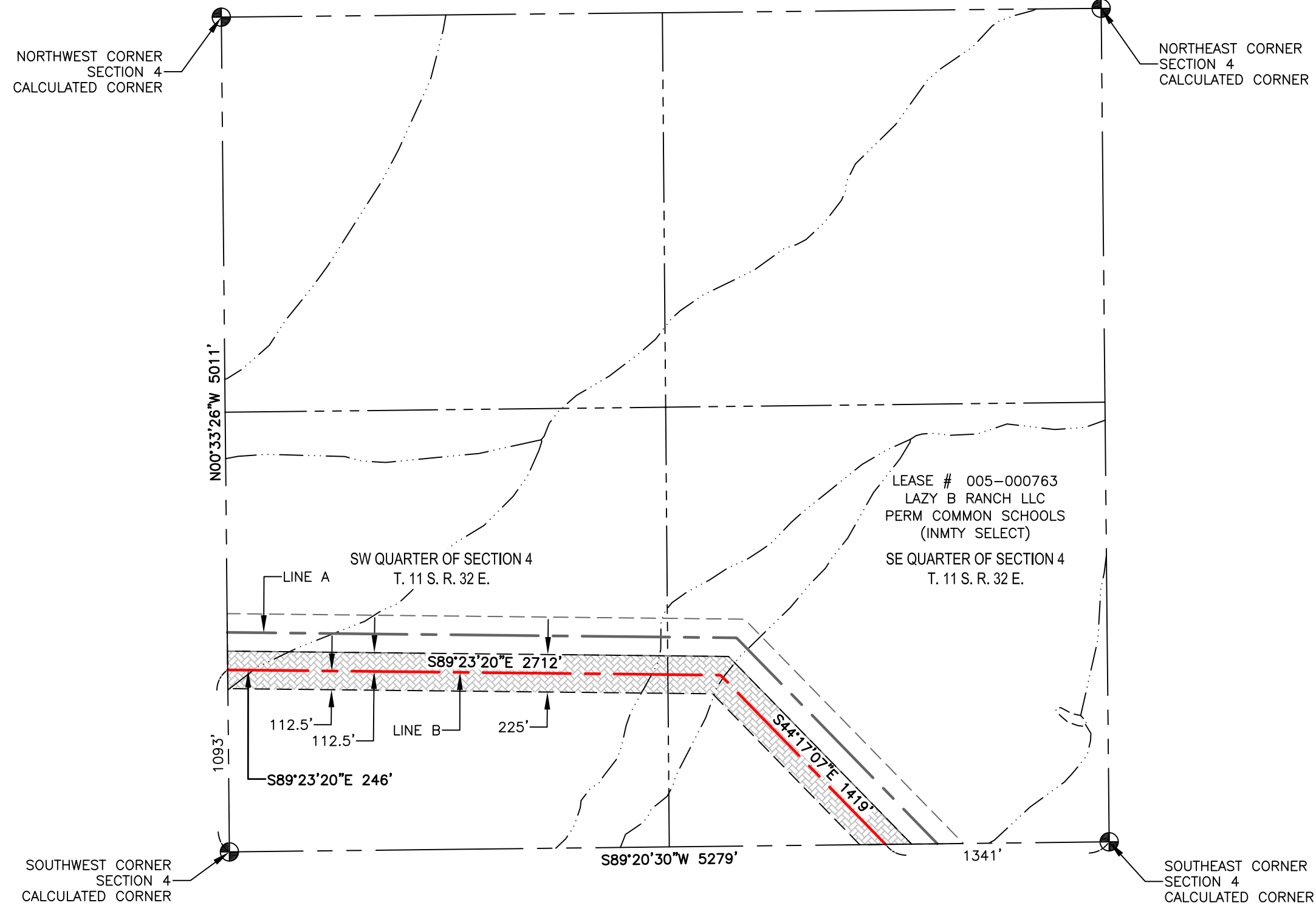
555 Zang St., Suite 210 Lakewood CO, 80228  
Ph: (303) 988-5852 Fax: (303) 988-2195  
EMAIL: info@sam.biz

SUNZIA  
SOUTHWEST TRANSMISSION  
PROJECT  
ASLD ROW APPLICATION  
GREENLEE COUNTY, ARIZONA

SHT-01\_005-000763-SUNZIA PRELIM ROW 11S-32E-5 B.DWG

# PRELIMINARY R-O-W EXHIBIT LINE B

## ARIZONA STATE LAND DEPARTMENT



ARIZONA STATE LAND DEPARTMENT  
 SECTION. 4  
 TOWNSHIP. 11S  
 RANGE. 32E

**LEGEND**

- RIGHT OF WAY CENTERLINE
- SECTION LINE
- QUARTER SECTION LINE
- FLOWLINES
- WATERBODY
- RIGHT OF WAY LINE B
- + CALCULATED SECTION CORNER

- NOTES:**
1. THIS EXHIBIT DOES NOT REPRESENT A MONUMENTED LAND SURVEY.
  2. BOUNDARY LINES SHOWN HEREON ARE FROM GIS DATABASES.
  3. ALL FEMA AND 404 WATERWAY INFORMATION SHOWN IS OF BEST REPRESENTATION OF AVAILABLE MAPS
  4. SURVEYING AND MAPPING, INC. ACCEPTS NO LIABILITY WITH RESPECT TO THE ACCURACY OF THE RECORD INFORMATION PROVIDED BY OTHERS.
  5. ALL BEARINGS ARE GRID BEARINGS AND ARE BASED ON NAD83 ARIZONA STATE PLANE, EAST ZONE. ALL DISTANCES ARE REPRESENTED IN GRID VALUES, MEASURED IN INTERNATIONAL FEET, AND ARE BASED ON SAID HORIZONTAL DATUM.

SHT 02\_005-000763-SUNZIA PRELIM ROW 11S-32E-4 B.DWG

	LINEAR FEET	SQUARE FEET	ACRES
<i>R-O-W LINE B</i>	377	984834	22.609

PROJECT: SW TRANSMISSION  
 JOB NUMBER: 1016037162  
 DATE: 8/10/2016  
 SCALE: 1" = 700'  
 TRACT ID:  
 DRAWN BY: FBL



**SAM**  
 SURVEYING - MAPPING - ENGINEERING

555 Zang St., Suite 210 Lakewood CO, 80228  
 Ph: (303) 988-5852 Fax: (303) 988-2195  
 EMAIL: info@sam.biz

SUNZIA  
 SOUTHWEST TRANSMISSION  
 PROJECT  
 ASLD ROW APPLICATION  
 GREENLEE COUNTY, ARIZONA