



L O G A N S I M P S O N

51 West Third Street Suite 450 Tempe, Arizona 85281  
Phone: 480.967.1343 Fax: 480.966.9232 www.logansimpson.com

# CLEAN WATER ACT SECTION 404 TECHNICAL MEMORANDUM

**To:** Joe Charles, Sales and Leasing, Arizona State Land Department  
**Copy:** Dylan George-Sills, Logan Simpson  
**From:** Wayne Colebank, Logan Simpson *WMC*  
**Date:** June 16, 2020  
**Project Name:** ASLD Parcel 217-14-984A  
**Subject:** Clean Water Act Section 404

---

## INTRODUCTION

This Technical Memorandum provides a summary of findings on the presence/absence of any potential Waters of the US (Waters) on the Arizona State Land Department's (ASLD) 7.8-acre Parcel (Number 217-14-984A), located southwest of the intersection of Thompson Peak Parkway and McDowell Mountain Ranch Road in Scottsdale, Arizona. As part of our due diligence for this Technical Memorandum, on June 4, 2020, Wayne Colebank and Dylan George-Sills of Logan Simpson completed a ground survey of the Parcel to evaluate the presence/absence of any potential Waters.

## SURVEY METHODS AND RESULTS

U.S. Army Corps of Engineers (USACE) guidelines for delineating Waters<sup>1</sup> were followed and each feature was documented with a GPS-capable device, ground photographs, and physical characteristics. A total of six (6) features were documented within the survey area, however, none of the features exhibited physical characteristics of Waters. A small portion of the western edge of the Parcel is located in the 100-year floodplain, however, available aerials, topographic maps, and National Wetland Inventory Maps were reviewed which further confirmed the lack of Waters. Therefore, based on our survey and data review, no Waters are present within the Parcel.

## CONCLUSION

We are of the opinion that no Waters exist within the survey area. The results of this evaluation have not been reviewed by the USACE. If review and acceptance from the USACE is desired, a preliminary or approved jurisdictional delineation request would need to be prepared and submitted to the USACE.

---

<sup>1</sup> A Field Guide to the Identification of the Ordinary High Water Mark (OHWM) in the Arid West Region of the Western United States (USACE 2008).

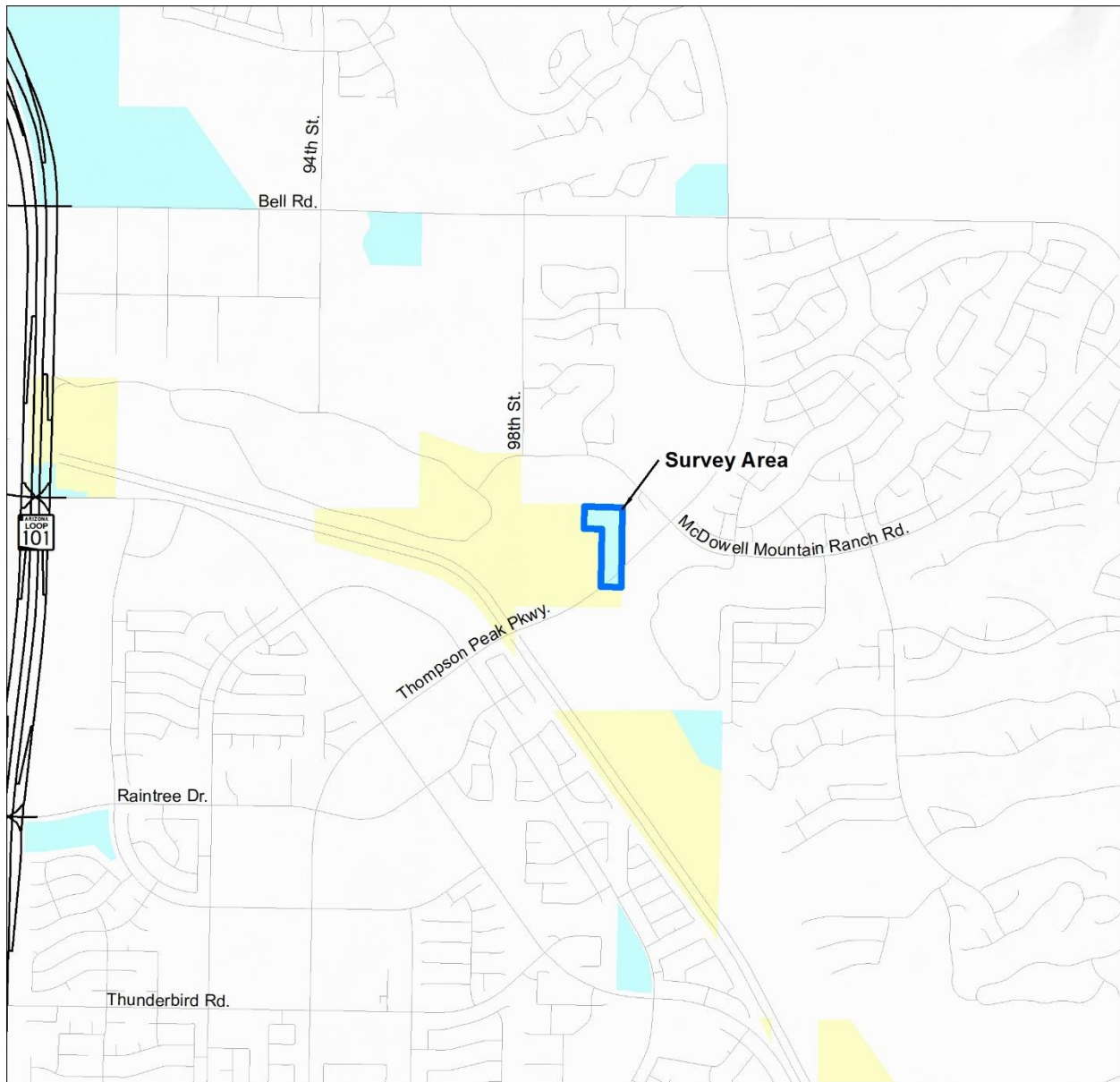
If you have any questions, please call me at (480) 967-1343 or email me at [wcolebank@logansimpson.com](mailto:wcolebank@logansimpson.com).

Thank you,

A handwritten signature in black ink, appearing to read "Wayne Colebank". The signature is fluid and cursive, with a long horizontal stroke at the end.

Wayne Colebank  
Vice President, Landscape Architect  
Logan Simpson

Enclosures:     Figure 1. Survey Area Vicinity Map  
                     Figure 2. Topographic Map  
                     Figure 3. Floodplain Map  
                     Figure 4. Ground Photograph Locations  
                     Ground Photographs



Source: Land ownership GIS coverage provided by Arizona State Land Department;  
Arizona Transportation Information System GIS Coverage (2007)

Key



Survey Area

Land Ownership



Bureau Of Reclamation



Private Land



State Trust Land

Miles

0

1



Figure 1. Survey Area Vicinity Map

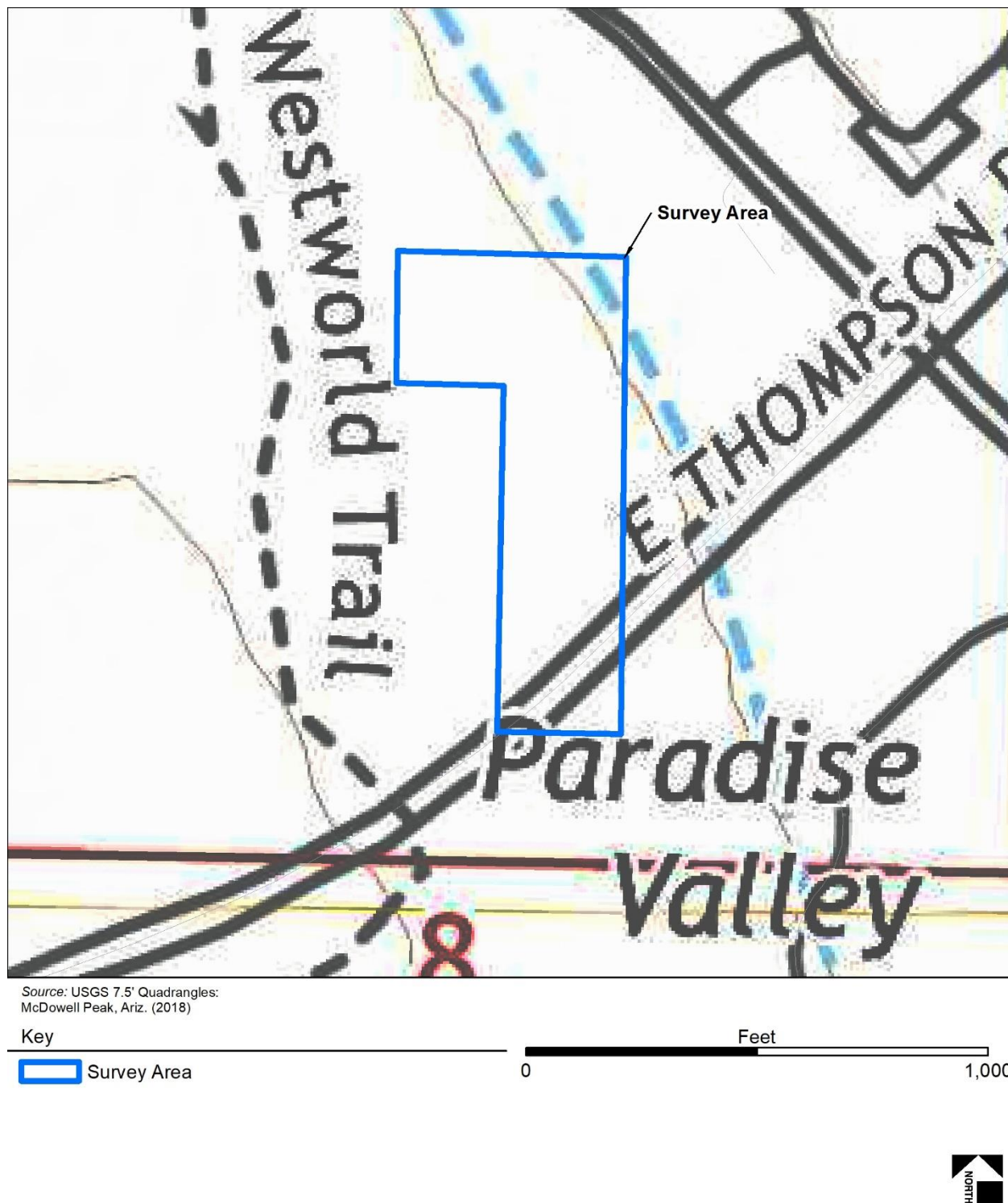


Figure 2. Topographic Map



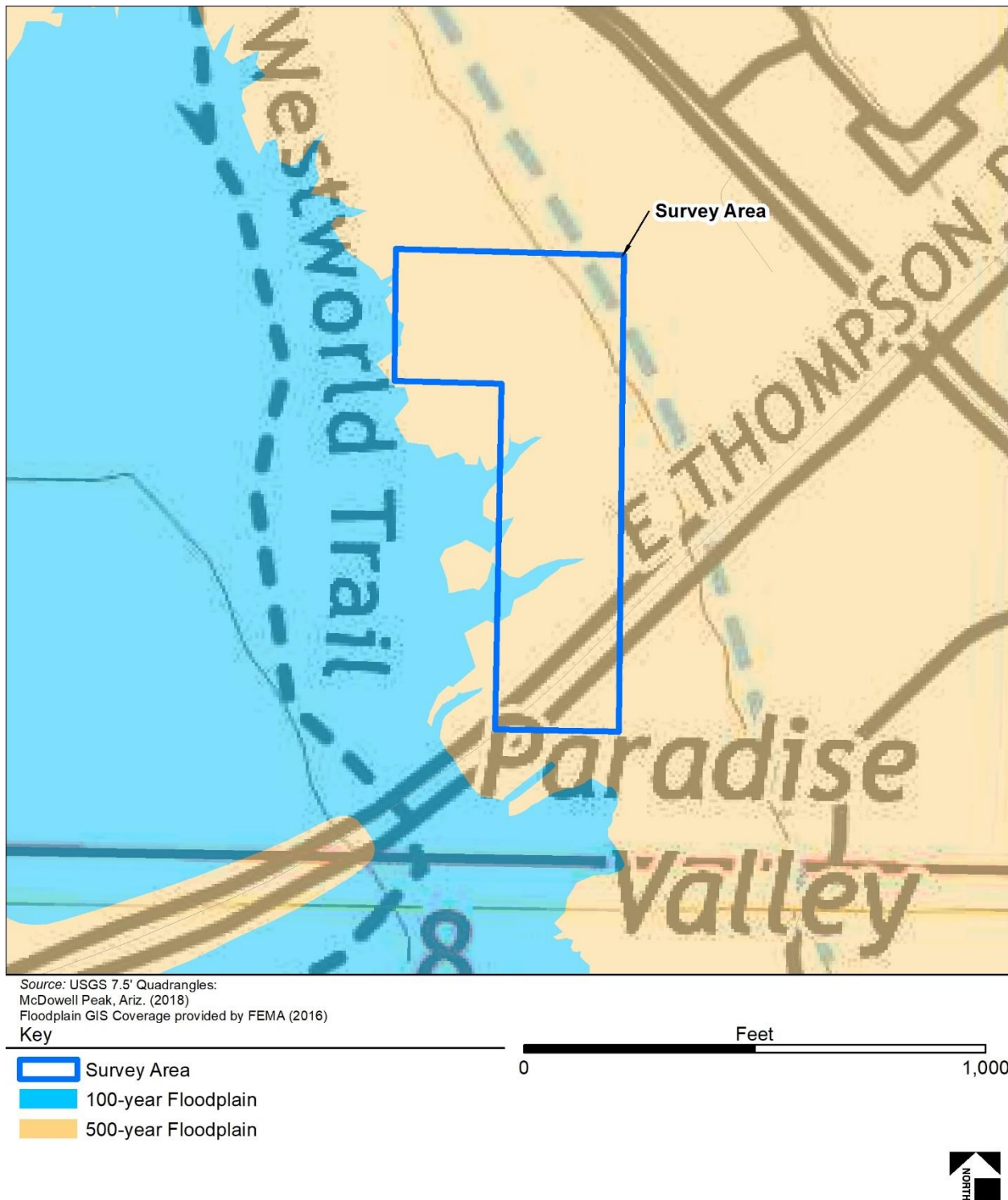
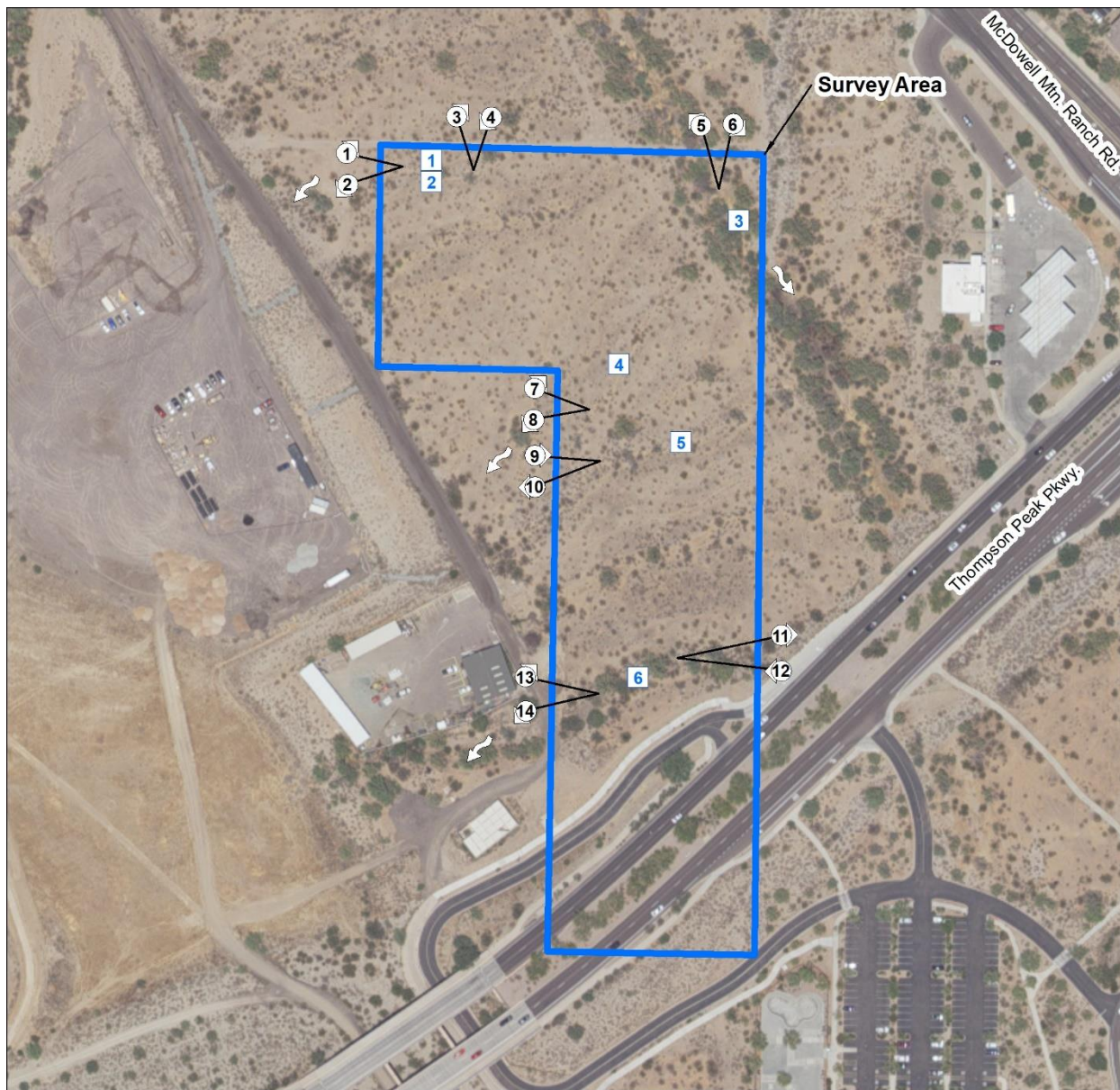


Figure 3. Floodplain Map



Source: Esri, USDA Farm Service Agency

Key



Survey Area



Feature number



Photo location



Flow direction

Feet

0

500



Figure 4. Ground Photograph Locations



Photo No. 1 (Feature 1)



Upstream view facing northeast

Photo No. 2 (Feature 1)



Downstream view facing southwest

Photo No. 3 (Feature 2)



Upstream view facing northeast

Photo No. 4 (Feature 2)



Downstream view facing southwest



Photo No. 5 (Feature 3)



Upstream view facing northwest

Photo No. 6 (Feature 3)



Downstream view facing southeast

Photo No. 7 (Feature 4)



Upstream view facing northeast

Photo No. 8 (Feature 4)



Downstream view facing southwest



Photo No. 9 (Feature 5)



Upstream view facing east

Photo No. 10 (Feature 5)



Downstream view facing west

Photo No. 11 (Feature 6)



Upstream view facing east

Photo No. 12 (Feature 6)



Downstream view facing west



Photo No. 13 (Feature 6)



Upstream view facing northeast

Photo No. 14 (Feature 6)



Downstream view facing southwest